

# EBS-260

## First steps

(Version 9/10/18-HH)



EBS

Ink-Jet Systems  
Alte Ziegelei 19 - 25  
D-51588 Nuembrecht  
[www.ebs-inkjet.de](http://www.ebs-inkjet.de)

## **Content**

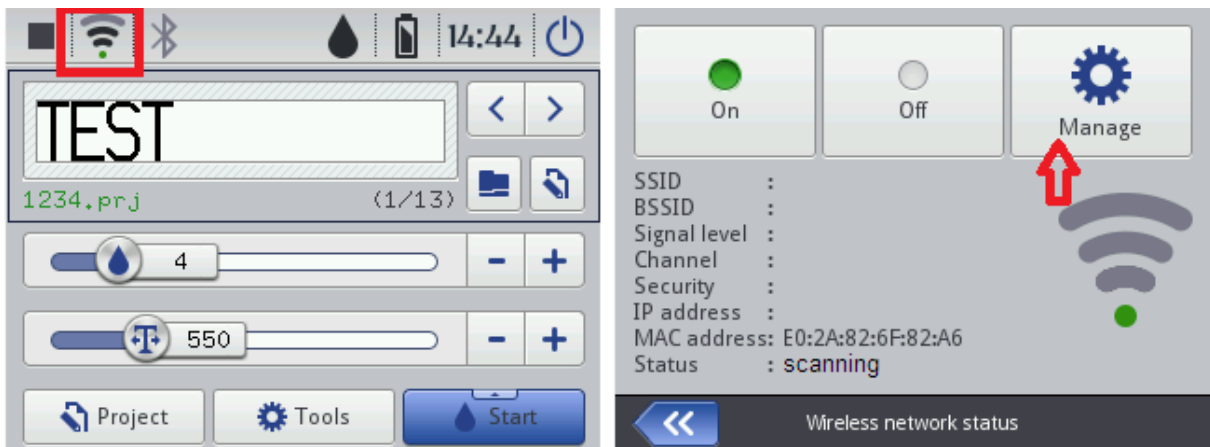
- WiFi-connection of the printer
- Passwords
- Direct access to user directories
- Recommended cleaning of nozzle plate


More information on: [Handjet.com](http://Handjet.com)

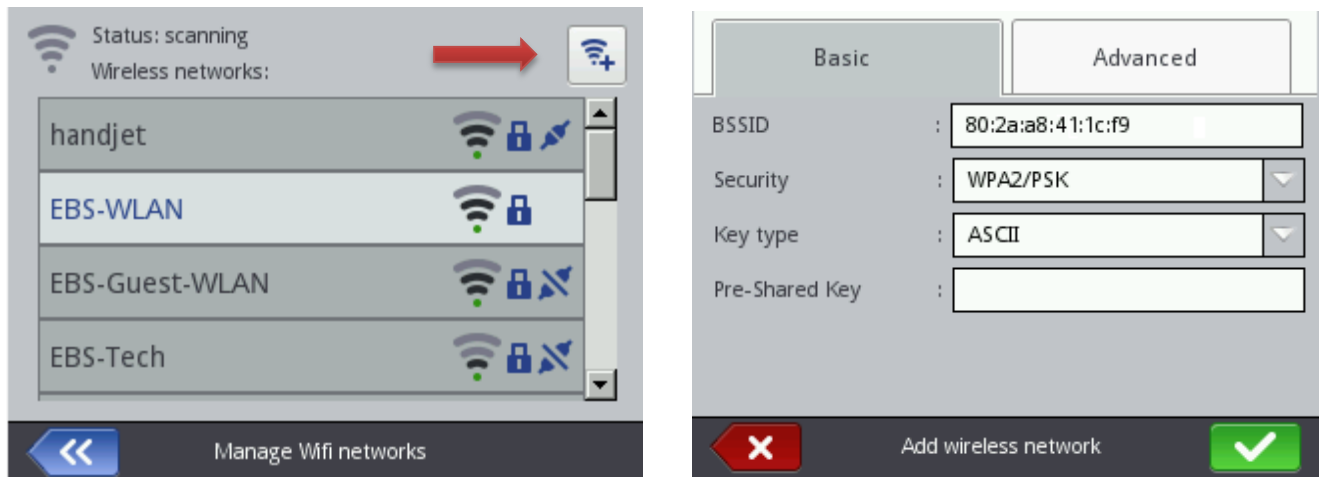
There you can download manuals in different languages and an Offline-editor.

## WiFi-connection of printer

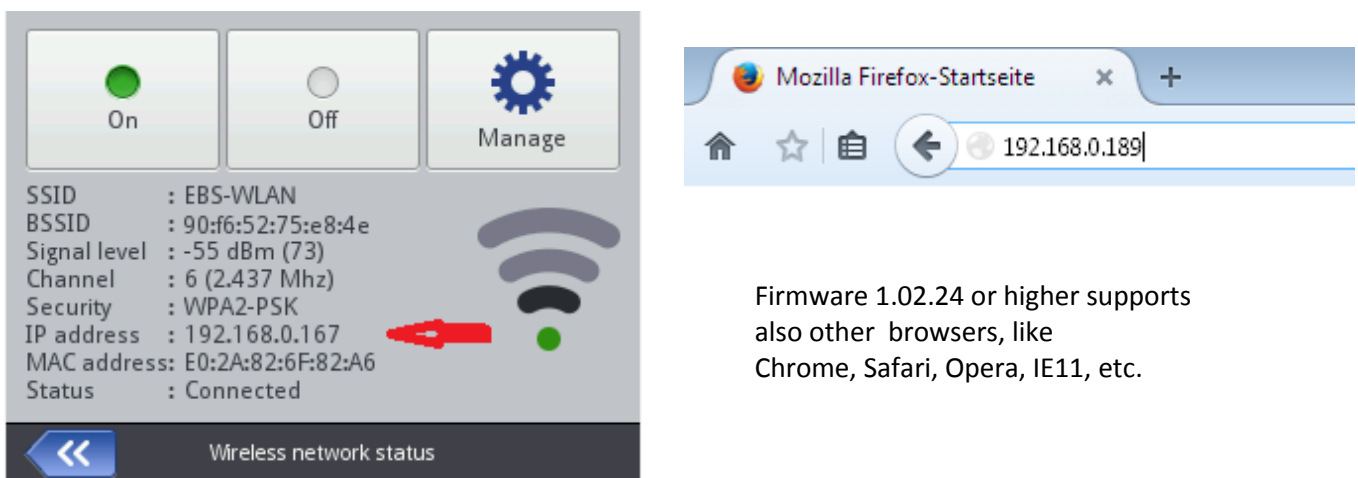
Tap the WiFi symbol on the touchscreen and then tap on "Manage".



Select the desired network and tap on the symbol . Select the suitable security and enter the Pre-shared key.



After connection read the IP address of the printer and enter it in the Firefox address bar.

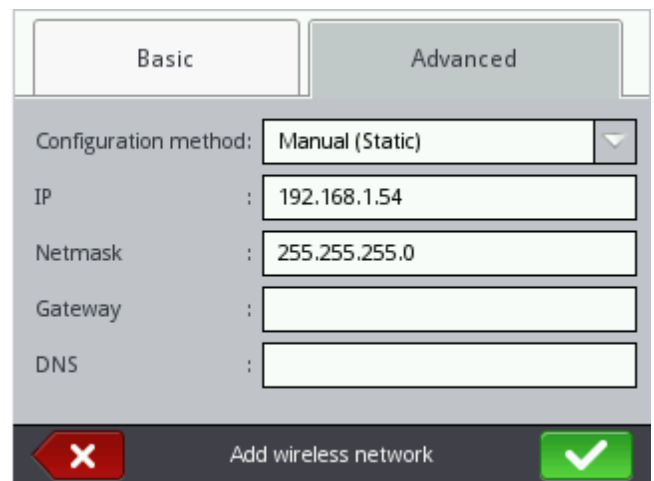
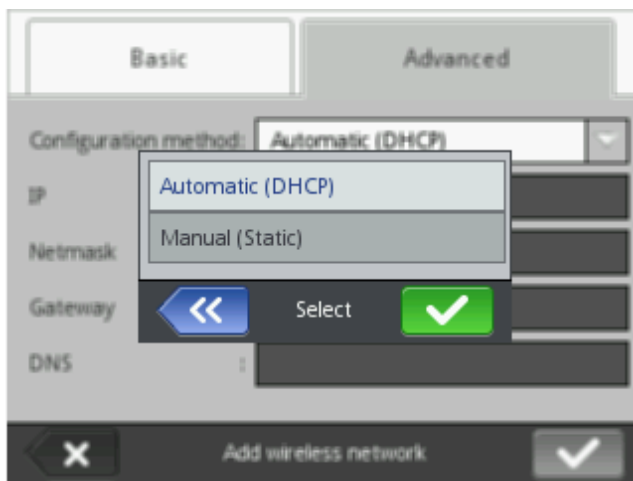


Firmware 1.02.24 or higher supports also other browsers, like Chrome, Safari, Opera, IE11, etc.

Networks, which were already connected in the past, can be deleted or edited.

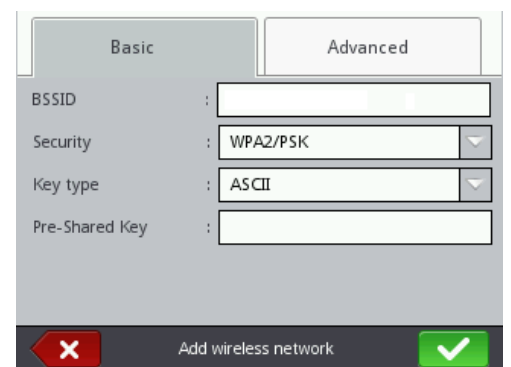


Under the tab “Advanced” you can choose between “DHCP” and “Static IP address”. Pre-selected is always “DHCP”.



If you have a network with several access points, delete the BSSID value. (BSSID is the MAC address of the connected router or access point.)

Now it connects only to the network name, independent from the available access point.



If you don't have any available WiFi networks, but you have a computer with built-in-WiFi, you can turn this to a WiFi hotspot.

You can find instructions for that in the internet, e.g. here:

<http://www.windowscentral.com/how-turn-your-windows-10-pc-wireless-hotspot>

There is also several free software available for building a hotspot, e.g. VirtualRouter.



## Passwords for EBS-260

Login - Administrator (can be changed): 1

Login - Service (not for customers): ●●●●●

Login - EBS (only for EBS-Staff): ●●●●●

## Direct access to user directories:

Per network neighborhood: Click on the Windows Start button and enter \\(IP address)\

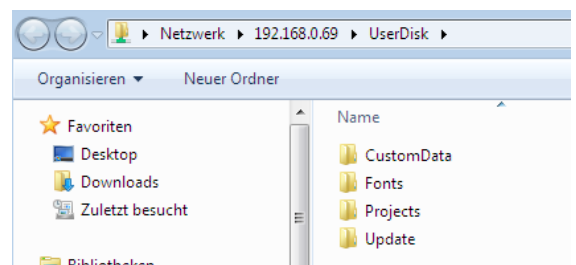


Open the found "UserDisk" and you see following directories.

The "Projects"-folder contains all project files and their preview files.

The "CustomData"-folder contains user-created files,

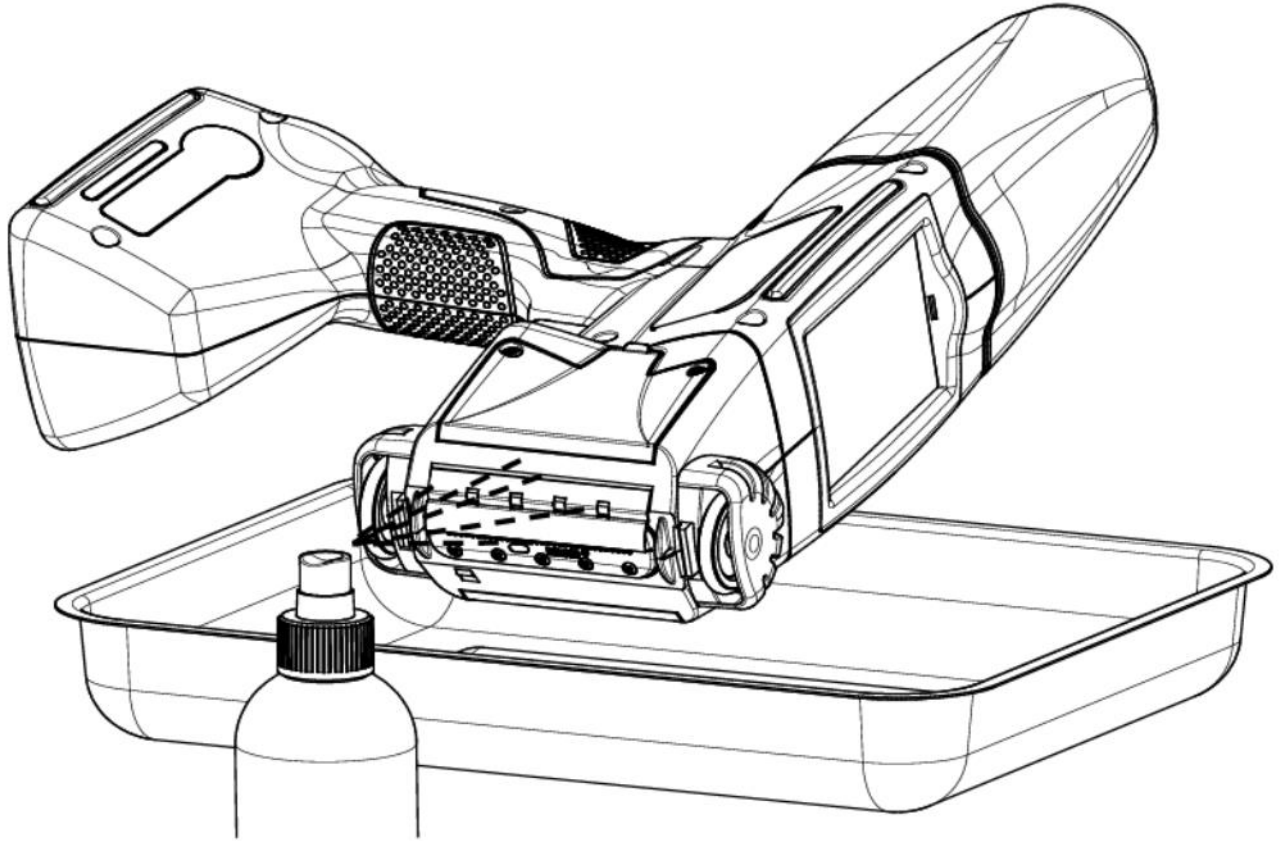
e.g. txt files, Excel files, php-Scripts, etc.



## Recommended cleaning of nozzle plate

It is recommended that the outer face of the print head, especially the nozzle plate, and possibly the guide rolls should be washed in order to remove the remnants of ink and dirt after the work has been finished and the printer has been switched off. The washing should be done in the following way:

- Place the HANDJET printer on its side and tilt its face downwards carefully (see the drawing below); in such a position dirty wash-up can flow freely out of the printer,
- Place a piece of absorptive cloth or a metal vessel, e.g. a tray, under the printer face,
- Wash the printer face with the use of a wash-up atomizer.



### **NOTE!**

If the printer face is washed in a different way than that shown above, then wash-up may get in to the printer's movable, bearing-based parts or inner electronic subassemblies unintentionally. In effect, the roll guides may seize or even lockup permanently and the (shaft-encoder) position sensor and other electronic subassemblies may get damaged.